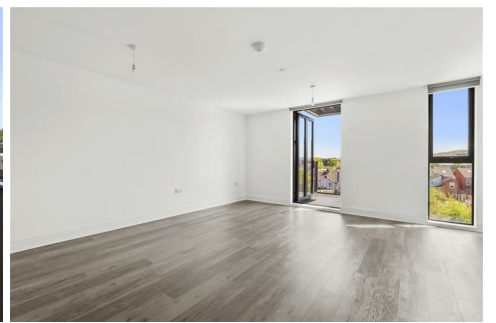


Fords.

SALES | LETTINGS | NEW HOMES



Flat 29, Bishops Building Leigh Street, High Wycombe, HP11 2WQ

Located within the contemporary Bishops Building, this newly built development offers a stylish, low-maintenance lifestyle in one of High Wycombe's most desirable areas. Designed with both comfort and practicality in mind, the property is part of a secure, professionally managed complex, providing residents with added peace of mind and easy living. Allocated parking is also available for a small additional monthly fee, adding to the overall convenience.

- Available for Immediate Move-in!
- Choice of Unfurnished/Furnished
- New Development Nearby to Town Centre
- Secure Underground Parking Available
- Lift Access within Building
- Pet Friendly!
- Open Plan Kitchen/Living Room
- Fully Fitted Kitchen w/ Appliances

£995 Per month

Bishops Building, The Old Works, HP11 2WP

Approximate Gross Internal Area = 398 sq ft / 37.0 sq m



Third Floor

Floor Plan produced for Ford & Partners by Media Arcade Ltd ©.
 Illustration for identification purposes only. Window and door openings are approximate. Whilst every attempt is made to assure accuracy in the preparation of this plan, please check all dimensions, shapes and compass bearings before making any decisions reliant upon them.

Energy Efficiency Rating		Current	Potential
Very energy efficient - lower running costs			
(92 plus) A			
(81-91) B			
(69-80) C			
(55-68) D			
(39-54) E			
(21-38) F			
(1-20) G			
Not energy efficient - higher running costs			
England & Wales	EU Directive 2002/91/EC		

Environmental Impact (CO ₂) Rating		Current	Potential
Very environmentally friendly - lower CO ₂ emissions			
(92 plus) A			
(81-91) B			
(69-80) C			
(55-68) D			
(39-54) E			
(21-38) F			
(1-20) G			
Not environmentally friendly - higher CO ₂ emissions			
England & Wales	EU Directive 2002/91/EC		



18 Crendon Street, High Wycombe, HP13 6LS

Tel: 01494 840 600 Email: sales@fordandpartners.com www.fordandpartners.com